



Product Catalogue 2025



GADZ VIEW
TECHNOLOGY LTD

Re-Imagine Technology

— Professional **OEM/ODM** CCTV Camera Manufacturer —



Gadz View Technology Limited

www.gadzviewtech.com

📍 14C Parkington Plaza Half-Way-Tree Road, Kingston, JAMAICA

✉ clientservice@gadzviewtech.com

Head Office: 876-622-2186

WhatsApp: 876-808-8553

Toll Free: 1-888-922-GADZ

Gadz View Product Catalogue

IPC Active Deterrence Camera Series(Red&Blue Light)-----	01
IPC PTZ Camera Series-----	02
IPC Dual Light ColorVu Camera Series(F1.6/F1.0 Lens)-----	03
IPC Super ColorVu Camera Series(1/1.8" Sensor+F1.0 Lens)-----	04
IPC IR Night Vision Camera Series-----	05
IPC Dual Lens 180 Degree Super Wide Angle Series-----	06
IPC LPR IP Camera Series-----	07
IPC Mini Hidden&Fisheye Camera Series-----	08
HD Analog Camera Series-----	09
Smart Home Series(Wifi Camera)-----	10
4G Camera / 4G Solar Camera Series-----	11
IPC USB HDMI Camera PCBA Customized Service-----	12
12MP NVR Service-----	13
4K NVR Series-----	14
DVR Series-----	15
Camera Accessories-----	16

Company Purpose

Problem Worth Solving

In an effort to mitigate the risk of domestic burglary, many individuals rely on burglar alarms. However, research has indicated that a significant portion of burglary signals, approximately 80%, are triggered by false alarms. This raises concerns about the effectiveness of these alarm systems.

Our Solution

Gadz View Technology LLC offers cutting-edge solutions that empower users to accurately identify the triggers behind alarm events. Our advanced security systems leverage the power of Deep Learning AI to develop proactive measures that prevent potential threats. With our state-of-the-art technology, we enable swift video analysis and search capabilities, facial recognition, real-time alert notifications, and comprehensive video analytics.



IPC Active Deterrence Camera Series (Red&Blue Light)

Professional OEM/ODM CCTV Camera Manufacturer.



- BC-IE35BBW-5MS(5MP@25fps)
- BC-IE35BBW-6M6(6MP@25fps)
- BC-IE35BBW-8M8(8MP@20fps)
- **5X 2.7-13.5mm Motor Lens**
- **Two Way Audio/SD Card**
- IR: 25m + White Light :15m
- IP66,PoE&DC12V



- BC-IB78BBW-5MS(5MP@25fps)
- BC-IB78BBW-6M6(6MP@25fps)
- BC-IB78BBW-8MS(8MP@20fps)
- BC-IB78BBW-8MH(8MP@30fps)
- **5X 2.7-13.5mm Motor Lens**
- **Two Way Audio/SD Card**
- IR: 30m + White Light :20m
- IP66,PoE&DC12V



- BC-IE252BW-5MS(5MP@25fps)
- BC-IE252BW-6M6(6MP@25fps)
- BC-IE252BW-8MS(8MP@20fps)
- BC-IE252BW-8MH(8MP@30fps)
- 2.8mm F1.0 Fixed Lens
- **Two Way Audio/SD Card**
- IR: 20m + White Light :15m
- IP66,PoE&DC12V



- BC-IB682BW-5MS(5MP@25fps)
- BC-IB682BW-6M6(6MP@25fps)
- BC-IB682BW-8MS(8MP@20fps)
- BC-IB682BW-8MH(8MP@30fps)
- 2.8mm F1.0 Fixed Lens
- **Two Way Audio/SD Card**
- IR: 20m + White Light :15m
- IP66,PoE&DC12V



Features

- 1.8MP(4K)/6MP/5MP H.265 PoE IP Camera
- Fixed Lens/ Motorized Lens Optional
- Support 2DNR/ 3DNR/ Sense-up/ WDR Functions etc.
- Built-in Mic./Speaker or Audio in/out Optional(RCA Cable Interface)
- Support RTSP&Onvif(17.2 with profile S),Compatible with HIK/DH/UNV/TVT NVRs
- SDK/CGI Available

IPC PTZ Camera Series

Professional OEM/ODM CCTV Camera Manufacturer.



- BC-IP202RW-2MS(2MP@30fps)
- BC-IP202RW-5MH(5MP@30fps)
- BC-IP202RW-8MS(8MP@20fps)
- BC-IP202RW-8MH(8MP@30fps)
- 2.8mm F1.6 Fixed Lens
(Digital Zoom Optional)
- Pan:0-355° /Tilt:0-90°
- IR range:30-35m
- IP66,PoE&DC12V



- BC-IP30BRW-2MS(2MP@30fps)
- BC-IP30BRW-5MH(5MP@30fps)
- BC-IP30BRW-8MS(8MP@20fps)
- BC-IP30BRW-8MH(8MP@30fps)
- 5X 2.7-13.5mm Motor Lens
- Pan:0-355° /Tilt:0-90°
- IR range:30-35m
- IP66,PoE&DC12V



- BC-IP30XRW-2MS(2MP@30fps)
- BC-IP30XRW-5MS(5MP@25fps)
- 12X 5-60mm Motor Lens
- Pan:0-355° /Tilt:0-90°
- IR range:30-35m
- IP66,PoE&DC12V



- BC-IP32BRW-5MS(5MP@25fps)
- BC-IP32BRW-6M6(6MP@25fps)
- BC-IP32BRW-8MS(8MP@20fps)
- BC-IP32BRW-8MH(8MP@30fps)
- 5X 2.7-13.5mm Motor Lens
(5X Optical*3X Digital=15X)
- Pan:0-350° /Tilt:0-90°
- IR range:30-35m
- IP66,PoE&DC12V

AI ONVIF ABSOLUTE MOVE SPEED CAMERA 200X ZOOM PTZ



- BC-IP53YRW-5MS(5MP@25fps)
- BC-IP53YRW-8MS(8MP@20fps)
- BC-IP53YRW-8MH(8MP@30fps)
- 20X Optical (4.7-125mm Motor Lens)
(20X Optical*10X Digital=200X)
- Pan:0-360°@45°/s
- Tilt:0-90°@45°/s
- IR Range:100-120m
- Plug&Play onvif compatibility
- IP66,PoE&DC12V

AI ONVIF ABSOLUTE MOVE SPEED CAMERA 300X ZOOM PTZ



- BC-IP60ZRW-5MS(5MP@25fps)
- BC-IP60ZRW-8MS(8MP@20fps)
- BC-IP60ZRW-8MH(8MP@30fps)
- 30X Optical (5-150mm Motor Lens)
(30X Optical*10X Digital=300X)
- Pan:0-360°@45°/s
- Tilt:0-90°@45°/s
- IR Range:180-200m
- Plug&Play onvif compatibility
- IP66,PoE&DC12V



Pan/Tilt/Zoom



Power over Ethernet



Audio



SD Card



Waterproof



Junction box

Features

- 1.8MP(4K)/6MP/5MP/4MP/2MP H.265 PoE IP Camera
- 2.Fixed Lens/Motorized Lens Optional
- 3.Support 2DNR/ 3DNR/ Sense-up/ WDR Functions etc.
- 4.Built-in Mic./Speaker or Audio in/out Optional
(RCA Cable Interface)
- 5.Support RTSP&Onvif(17.2 with profile S)&HIK Protocol
Compatible with HIK/DH/UNV/TVT NVRS
- 6.SDK/CGI Available

(NDA Compliant)

IPC Dual Light ColorVu Camera Series(F1.6/F1.0 Lens)

Professional OEM/ODM CCTV Camera Manufacturer.



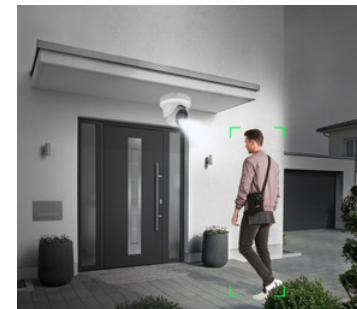
- BC-IE252DW-4M4(4MP@25fps)
- BC-IE252DW-5MS(5MP@25fps)
- BC-IE252DW-6M6(6MP@25fps)
- BC-IE252DW-8MS(8MP@20fps)
- BC-IE252DW-8MH(8MP@30fps)
- 2.8mm Fixed Lens
- **Two Way Audio**
- Support SD Card, Max up to 256G
- IR: 20m + White Light :15m
- IP66,PoE,DC 12V



- BC-IE352DW-5MS(5MP@25fps)
- BC-IE352DW-6M6(6MP@25fps)
- BC-IE352DW-8MS(8MP@20fps)
- BC-IE352DW-8MH(8MP@30fps)
- 2.8mm Fixed Lens
- **Two Way Audio**
- Support SD Card, Max up to 256G
- IR: 25m + White Light :15m
- IP66,PoE,DC 12V



- BC-IB682DW-4M4(4MP@25fps)
- BC-IB682DW-5MS(5MP@25fps)
- BC-IB682DW-6M6(6MP@25fps)
- BC-IB682DW-8MS(8MP@20fps)
- BC-IB682DW-8MH(8MP@30fps)
- 2.8mm Fixed Lens
- **Two Way Audio**
- Support SD Card, Max up to 256G
- IR: 20m + White Light :15m
- IP66,PoE,DC 12V



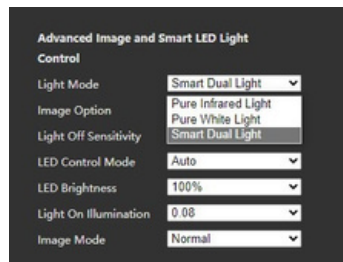
When People come, **Color Night Vision**



- BC-IB782DW-5MS(5MP@25fps)
- BC-IB782DW-6M6(6MP@25fps)
- BC-IB782DW-8MS(8MP@20fps)
- BC-IB782DW-8MH(8MP@30fps)
- 2.8mm Fixed Lens
- **Two Way Audio**
- Support SD Card, Max up to 256G
- IR: 30m + White Light :20m
- IP66,PoE,DC 12V



- BC-IB98BDW-5MS(5MP@25fps)
- BC-IB98BDW-6M6(6MP@25fps)
- BC-IB98BDW-8MS(8MP@20fps)
- BC-IB98BDW-8MH(8MP@30fps)
- **BC-IB98BDW-9MS(12MP@20fps)**
- **5X 2.7-13.5mm Motor Lens**
- **Two Way Audio**
- Support SD Card, Max up to 256G
- IR: 30m + White Light :20m
- IP66,PoE,DC 12V



Configuration → Image → Light Mode
 → Light Modes Optional:
 Pure Infrared Light
 /Pure White Light
 /Smart Dual Light



No People, **Black&White Night Vision**

Features

1. 12MP/8MP(4K)/6MP/5MP/4MP/2MP H.265 PoE IP Camera
2. Fixed Lens/ Motorized Lens Optional
3. Support 2DNR/ 3DNR/ Sense-up/ WDR Functions etc.
4. Built-in Mic./Speaker or Audio in/out Optional(RCA Cable Interface)
5. Support RTSP&Onvif(17.2 with profile S), Compatible with HIK/DH/UNV/TVT NVRS
6. SDK/CGI Available

(NDA Compliant)

IPC Super ColorVu Camera Series(1/1.8" Sensor)

Professional OEM/ODM CCTV Camera Manufacturer.



- BC-IE352WW-5MA(5MP@25fps)
- BC-IE35BWW-5MA(5MP@25fps)
- BC-IE352WW-8MA(8MP@20fps)
- **1/1.8" Sensor**
- **2.8mm F1.0 M16 Fixed Lens**
- **5X 2.7-13.5mm Motor Lens**
- **Two Way Audio**
- White Light :20m
- IP66,PoE,DC12V



- BC-IB782WW-5MA(5MP@25fps)
- BC-IB78BWW-5MA(5MP@25fps)
- BC-IB782WW-8MA(8MP@20fps)
- BC-IB78BWW-8MA(8MP@20fps)
- **1/1.8" Sensor**
- **2.8mm F1.0 M16 Fixed Lens**
- **5X 2.7-13.5mm Motor Lens**
- **Two Way Audio**
- White Light :20m
- IP66,PoE,DC12V



- BC-IE252WW-5MA(5MP@25fps)
- BC-IE252WW-8MA(8MP@20fps)
- **1/1.8" Sensor**
- **2.8mm F1.0 M16 Fixed Lens**
- **Two Way Audio**
- White Light :20m
- IP66,PoE,DC12V



- BC-IB682WW-5MA(5MP@25fps)
- BC-IB682WW-8MA(8MP@20fps)
- **1/1.8" Sensor**
- **2.8mm F1.0 M16 Fixed Lens**
- **Two Way Audio**
- White Light :20m
- IP66,PoE,DC12V

IR Night Vision



starlight



**1/1.8" Sensor
super starlight**



Features

- 1.8MP/5MP H.265 PoE IP Camera
- 2.Support 2DNR/ 3DNR/ Sense-up/ WDR Functions etc.
- 3.Built-in Mic./Speaker or Audio in/out Optional(RCA Cable Interface)
- 4.Support RTSP&Onvif(17.2 with profile S),Compatible with HIK/DH/UNV/TVT NVRs
- 5.SDK/CGI Available

(NDA Compliant)

IPC IR Night Vision Camera Series

Professional OEM/ODM CCTV Camera Manufacturer.



- BC-IE232RW-2MS(2MP@30fps)
- BC-IE232RW-5MS(5MP@25fps)
- BC-IE232RW-6M6(6MP@25fps)
- BC-IE232RW-8MS(8MP@20fps)
- BC-IE232RW-8MH(8MP@30fps)
- 6pcs LEDs 20m IR Distance
- 2.8mm Fixed Lens
- IP66,PoE&DC12V



- BC-IE332RW-2MS(2MP@30fps)
- BC-IE332RW-5MS(5MP@25fps)
- BC-IE332RW-6MH(6MP@25fps)
- BC-IE332RW-8MS(8MP@20fps)
- BC-IE332RW-8MH(8MP@30fps)
- **BC-IE332RW-9MS(12MP@25fps)**
- 6pcs LEDs 25m IR Distance
- 2.8mm Fixed Lens
- IP66,PoE&DC12V



- BC-IV232RW-2MS(2MP@30fps)
- BC-IV232RW-5MS(5MP@25fps)
- BC-IV232RW-6M6(6MP@25fps)
- BC-IV232RW-8MS(8MP@20fps)
- BC-IV232RW-8MH(8MP@30fps)
- 18pcs LEDs 25m IR Distance
- 2.8mm Fixed Lens
- IP66,PoE&DC12V



- BC-IV30BRW-2MS(2MP@30fps)
- BC-IV30BRW-5MS(5MP@25fps)
- BC-IV30BRW-6M6(6MP@25fps)
- BC-IV30BRW-8MS(8MP@20fps)
- BC-IV30BRW-8MH(8MP@30fps)
- **BC-IV30BRW-9MS(12MP@25fps)**
- 4pcs LEDs 35m IR Distance
- **5X 2.7-13.5mm Motor Lens**
- IP66,PoE&DC12V



- BC-IB612RW-2MS(2MP@30fps)
- BC-IB612RW-5MS(5MP@25fps)
- BC-IB612RW-6M6(6MP@25fps)
- BC-IB612RW-8MS(8MP@20fps)
- BC-IB612RW-8MH(8MP@30fps)
- 16pcs LEDs 15m IR Distance
- 2.8mm Fixed Lens
- IP66,PoE&DC12V



- BC-IB71BRW-2MS(2MP@30fps)
- BC-IB71BRW-5MS(5MP@25fps)
- BC-IB71BRW-6M6(6MP@25fps)
- BC-IB71BRW-8MS(8MP@20fps)
- BC-IB71BRW-8MH(8MP@30fps)
- 6pcs LEDs 35m IR Distance
- **5X 2.7-13.5mm Motor Lens**
- IP66,PoE&DC12V



SD Card



Waterproof



Junction box



Bracket

Features

- 1.12MP/8MP(4K)/6MP/5MP/4MP/2MP H.265 PoE IP Camera
- 2.Fixed Lens/ Motorized Lens Optional
- 3.Support 2DNR/ 3DNR/ Sense-up/ WDR Functions etc.
- 4.Built-in Mic,Audio in/out Optional(RCA Cable Interface)
- 5.Support RTSP&Onvif(17.2 with profile S),Compatible with HIK/DH/UNV/TVT NVRS
- 6.SDK/CGI Available

(NDAA Compliant)

IPC Dual Lens 180 Degree Super Wide Angle Series

Professional OEM/ODM CCTV Camera Manufacturer.



- BC-IB814DW-4M2(4MP@20fps)
- BC-IB814DW-8M4(8MP@20fps)
- 8MP(Max. 4096*1944)
- Smart Dual Light Colorvu
- **Two Way Audio/SD Card**
- **viewing angle of 180°**
- **4mm Fixed Lens*2**
- Max.256G SD Card
- IR range: (IR: 20m) + (White Light : 15m)
- IP66,PoE&DC12V



(Left lens imaging effect)

(Right lens imaging effect)



(Binocular splicing ultra-wide angle camera imaging effect: no distortion, high fidelity.)

Features

- 1.8MP/4MP H.265 PoE IP Camera
- 2.Dual 4mm Lens
- 3.Support 2DNR/ 3DNR/ Sense-up/ WDR Functions etc.
- 4.Support RTSP&Onvif(17.2 with profile S)&HIK Protocol
Compatible with HIK/DH/UNV/TVT NVRs
- 5.SDK/CGI Available

IPC LPR IP Camera Series

Professional OEM/ODM CCTV Camera Manufacturer.

Camera1



Bracket(Optional)

- BC-IB996FW-2MS(2MP@30fps)
- BC-IB996FW-5MH(5MP@30fps)
- 10X Zoom (5-50mm Manual Lens)
- BLC/3D DNR/WDR
- 4pcs White Light LEDs 35m
- IP66,PoE,DC12V

Camera2



- BC-IB99BWW-4M4(4MP@25fps)
- 4X Zoom Motorized lens (2.8-12mm)
- **Intelligent Recognition Vehicle Capture rate $\geq 99.9\%$**
- TF card interface (up to 256G)



Normal Camera

VS

License Plate Camera



Features

- Camera1: • Support RTSP&Onvif(17.2 with profile S) Compatible with many third-party NVRs and CMS
- Support multiply Web Browsers: IE/Firefox/Chrome/Safari etc.
- Camera2: • All-day vehicle capture rate is higher than 99.9%;
- All-day license plate recognition rate is higher than 95%;
- Support cloud control function for parameter configuration, video preview and remote upgrade;
- SDK Available

(NDA Compliant)

IPC Mini Hidden&Fisheye Camera Series

Professional OEM/ODM CCTV Camera Manufacturer.



- . BC-IM1170B-2MS(2MP@30fps)
- . BC-IM1170B-5M4(5MP@25fps)
- . BC-IM1170B-6M6(6MP@25fps)
- . 3.7mm Pinhole Lens
- . Built-in Mic(Optional)
- . PoE&DC12V



- . BC-IM2170W-2MS(2MP@30fps)
- . BC-IM2170W-5M4(5MP@25fps)
- . BC-IM2170W-6M6(6MP@25fps)
- . 3.7mm Pinhole Lens
- . Built-in Mic(Optional)
- . BLC/3D DNR/WDR
- . Plug&Play onvif compatibility
- . PoE&DC12V



- . BC-IM217RW-2MS(2MP@30fps)
- . BC-IM217RW-5M4(5MP@25fps)
- . BC-IM217RW-6M6(6MP@25fps)
- . 3.7mm Pinhole Lens
- . **48pcs 940nm Invisible IR Leds 15m**
- . Built-in Mic(Optional)
- . PoE&DC12V



- . BC-IM3170W-2MS(2MP@30fps)
- . BC-IM3170W-5M4(5MP@25fps)
- . BC-IM3170W-6M6(5MP@25fps)
- . 3.7mm Pinhole Lens
- . PoE&DC12V



- . BC-IF121RW-2MS(2MP@30fps)
- . BC-IF121RW-5M4(5MP@25fps)
- . BC-IF121RW-6M6(5MP@25fps)
- . 1.7/1.44mm Fisheye Lens
- . 3pcs Array IR Leds 15m IR
- . PoE&DC12V



- . BC-IF131RW-2MS(2MP@30fps)
- . BC-IF131RW-5MS(5MP@25fps)
- . BC-IF131RW-8MS(8MP@20fps)
- . BC-IF131RW-8MH(8MP@30fps)
- . **BC-IF131RW-9MS(12MP@25fps)**
- . 1.7/1.44mm Fisheye Lens
- . Two-way Audio(Optional)
- . 3pcs Array IR Leds 15m IR
- . **IP66,PoE&DC12V**



Power over Ethernet



Audio



SD Card



Hidden

Features

1. 12MP/8MP(4K)/6MP/5MP/4MP/2MP H.265 PoE IP Camera
2. Support 2DNR/ 3DNR/ Sense-up/ WDR Functions etc.
3. Built-in Mic./Speaker or Audio in/out Optional(RCA Cable Interface)
4. Support RTSP&Onvif(17.2 with profile S), Compatible with HIK/DH/UNV/TVT NVRS
5. SDK/CGI Available

(NDAA Compliant)

HD Analog Camera Series

Professional OEM/ODM CCTV Camera Manufacturer.



- BC-TV203RW-2F3(2MP@30fps)
- BC-TV203RW-5FK(5MP@20fps)
- BC-TV203RW-8FS(8MP@15fps)
- TVI / CVI / AHD / CVBS 4 in 1 Solution
- 15pcs IR LEDs 15m IR
- 3.6mm Fixed Lens
- IP66,DC12V



- BC-TP30BRW-2FS(2MP@30fps)
- BC-TP30XRW-2FS(2MP@30fps)
- TVI / CVI / AHD / CVBS 4 in 1 Solution
- 2PCS LEDS 35m IR
- **5X 2.7-13.5mm AF Motor Len**
- **12X 5-60mm AF Motor Lens**
- Pan:0-360° /Tilt:0-90°
- IP66,DC12V



- BC-TB683WW-2F3(2MP@30fps)
- BC-TB683WW-2FC(5MP@20fps)
- BC-TB683WW-8FH(8MP@15fps)
- TVI / CVI / AHD / CVBS 4 in 1 Solution
- 6pcs IR Leds 30m IR
- 3.6mm Fixed Lens
- IP66,DC12V



- BC-TF131RW-5FK(5MP@20fps)
- TVI / CVI / AHD / CVBS 4 in 1 Solution
- 3pcs IR Leds 15m IR
- 1.44mm Fisheye Lens
- **IP66,DC12V**



- BC-TE213RW-2F3(2MP@30fps)
- BC-TE213RW-5FK(5MP@20fps)
- BC-TE213RW-8FH(8MP@15fps)
- TVI / CVI / AHD / CVBS 4 in 1 Solution
- 18pcs IR LED 15m IR
- 3.6mm Fixed Lens
- IP66,DC12V



- BC-TE318RW-2F3(2MP@30fps)
- BC-TE318RW-5FK(5MP@20fps)
- BC-TE318RW-8FS(8MP@15fps)
- TVI / CVI / AHD / CVBS 4 in 1 Solution
- 24pcs IR LED 30m IR
- **5X 2.7-13.5mm Manual Varifocal Lens**
- IP66,DC12V



- BC-TE233RW-2F3(2MP@30fps)
- BC-TE233RW-5FK(5MP@20fps)
- BC-TE233RW-8FS(8MP@15fps)
- BC-TE233RW-8F8(8MP@15fps)
- TVI / CVI / AHD / CVBS 4 in 1 Solution
- 6pcs IR Leds 30m IR
- 3.6mm Fixed Lens
- IP66,DC12V



- BC-TE33DRW-5FK(5MP@20fps)
- BC-TE33DRW-5FK(5MP@20fps)
- TVI / CVI / AHD / CVBS 4 in 1 Solution
- 6pcs IR Leds 20m IR
- **2.8-12mm Motorized Lens**
- IP66,DC12V

(NDA Compliant)

Features

- 1.8MP/5MP/2MP 4in1 TVI/AHD/CVI/Analog
- Fixed Lens/ Manual Varifocal Lens/ Motorized Lens Optional
- Support 2DNR/ 3DNR/ Sense-up/ D-WDR Functions etc.
- Support UTC Control Function (RS-485 Control function Optional)
- Support Coaxial Audio(TVI & CVI)

Smart Home Series(Wifi Camera)

Professional OEM/ODM CCTV Camera Manufacturer.



- BC-WB683RW-2T2(2MP@20fps)
- BC-WB683RW-4T4(4MP@20fps)
- BC-WB683RW-5T5(5MP@20fps)
- BC-WB683SW-8TS(8MP@10fps)
- 3.6mm fixed lens
- Built-in Mic and Speaker
- 30m IR
- H.264/H.265 Video Compression
- Support SD Card, Maxp to 256G
- Waterproof IP66



- BC-WP203RW-2T2(2MP@20fps)
- BC-WP203RW-4T4(4MP@20fps)
- BC-WP20BRW-5TS(5MP@20fps)
- **3.6mm/2.7~13.5mm 5X Optical Lens**
- Built-in Mic and Speaker
- 30m IR
- H.264/H.265 Video Compression
- Support SD Card, Maxp to 256G
- Waterproof IP66



- BC-WP32BRW-2T2(2MP@20fps)
- BC-WP32BRW-5T5(5MP@20fps)
- 35m IR+25m white light
- **2.7~13.5mm 5X Optical Lens**
- Support humanoid tracking
- Wall mounting and hoisting
- 35m IR+25m white light
- H.264/H.265 Video Compression
- Support WiFi, up to 100m
- Waterproof IP66



- BC-WP293RW-2T2(2MP@20fps)
- BC-WP293RW-4T4(4MP@25fps)
- Support humanoid tracking
- **2.8mm+8mm Dual 4mm Lens**
- Binocular lens, support image enlargement
- Supports voice alerting
- Support SD Card, Maxp to 256G
- Support 4G/WiFi, up to 100m
- 40m IR+30m white light
- Supports two-way Audio
- Waterproof IP66



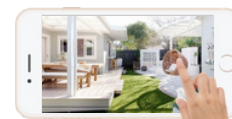
- BC-WP223DW-2T2(2MP@20fps)
- BC-WP223DW-4T4(4MP@25fps)
- BC-WP22BDW-2T2(5MP@20fps)
- 40m IR+30m white light
- **3.6mm/2.7~13.5mm 5X Optical Lens**
- Support preset point and cruise
- Supports two-way Audio
- Support humanoid tracking
- Support wall mounting and hoisting
- Support 4G/WiFi, up to 100m
- Waterproof IP66



- BC-WP353DW-2T2(2MP@20fps)
- BC-WP353DW-5T5(5MP@20fps)
- BC-WP35BDW-5T5(5MP@20fps)
- 40m IR+30m white light
- **3.6mm/2.7~13.5mm 5X Optical Lens**
- Support humanoid tracking
- Wall mounting and hoisting
- Red & Blue sound and light alarm
- Support 4G/WiFi, up to 100m
- Waterproof IP66



- BC-WP58YDW-2T2(5MP@20fps)
- BC-WP58YDW-5T5(5MP@20fps)
- 100m IR+40m white light
- Super laser night vision
- Support preset point and cruise
- Supports two-way Audio
- Support intelligent humanoid tracking
- Support 4G/WiFi, up to 100m
- Support SD Card, Max. up to 256G
- **20X Optical zoom**



- Features**
- 1.ONVIF P2P H.265/H.264 IP Camera
 - 2.Recording: Motion Detection, Schedule
 - 3.Support Motion Detection and Alarm Notification
 - 4.Multiple Ways of Configuration: LAN/AP (Access Point)/Scan/UID Adding
 - 5.Support WiFi SD Card(Max 256G) Built in MIC and Speaker

4G Camera / 4G Solar Camera Series

Professional OEM/ODM CCTV Camera Manufacturer.



- . BC-SLB-4020
- . BC-SLB-4040
- . BC-SLB-6020
- . With capacity display to visualize the capacity status of the battery
- . Solar total power of solar energy is 40W/60W/80W
- . Battery capacity is 20AH/40AH
- . Maximum charging voltage:6V
- . Maximum charging current: 6.6A
- . Maximum Output Current: 2.5A
- . Output voltage: DC 12V
- . Waterproof IP66



- . BC-SP223DW-2T
- . BC-SP22BDW-2T
- . BC-SP22BDW-5T5
- . No Need Power supply, Solar panel powered
- . Supports two-way Audio
- . Support 4G/WiFi, up to 100m
- . Support SD Card, Max. up to 256G
- . PIR Detection
- . 3.6mm/2.7~13.5mm 5X Optical Lens
- . Smart Record, People Come, Record; People Gone, Stop Working
- . Smart White Light, People Come, Light ON; People Gone, Light OFF



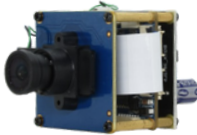
- . BC-SP353DW-2T
- . BC-SP35BDW-5T5
- . BC-SP35BDW-8MS
- . Red&Blue Light
- . No Need Power supply, Solar panel powered
- . Supports two-way Audio
- . Support 4G/WiFi, up to 100m
- . Support SD Card, Max. up to 256G
- . PIR Detection
- . 3.6mm/2.7~13.5mm 5X/4.7-47mm 10X Optical Lens
- . Smart Record, People Come, Record; People Gone, Stop Working
- . Smart White Light, People Come, Light ON; People Gone, Light OFF

Features

1. Standard H.264/H.265 Video Compression
2. Support Dual Streams
3. Support P2P, Web Browser, Free VMS and Mobile App
4. Support TCP/IP,UDP/IP,HTTP,ICMP,FTP,EMAIL,TELNET, ONVIF,etc.
5. Support D-WDR/Brightness Setting/BLC
6. Support 4G Function

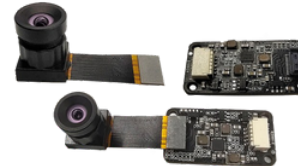
IPC USB HDMI Camera PCBA Customized Service

Professional OEM/ODM CCTV Camera Manufacturer.



. IP Camera Module

- . AI Functions Customized/Algorithm Embedded
- . Protocols Customized
- . Different SoC+Sensor PCBA Customized
- . Open System, Support Customer software Functions self-developing
- . Support SDK
- . Onivf/RTMP Protocol(NDAA Compliant)
- . For Security/Traffic/Industry



. USB Global shutter camera Module

- . Window XP/Win 7/10; MAX; MacOSx; Linux; Ubuntu /Android 4.0+
- . 120dB WDR
- . UVC Protocol (YUV2/MJPEG)
- . MJPEG:1600*1200@60fps/1280*720@90fps/640*480@180fps; 640*380@180fps
- . For Industry/Traffic



. USB 2.0/3.0+HDMI Camera Module

- . USB3.0 4K@30fps/HDMI 4K@30fps
- . Window XP/Win 7/10; MAX; MacOSx; Linux; Ubuntu /Android 4.0+
- . 120dB WDR
- . UVC Protocol (YUV2/MJPEG)
- . For Security/Industry/Video conference camera/streaming camera



. USB2.0/3.0+HDMI+3G-SDI+RJ45(Network) 4in1 Camera Module

- . Support USB3.0 4K@30fps/HDMI 4K@30fps/3G-SDI 1080P@30fps Network IPC 4K@30fps
- . Rich video output interface
- . Open System, Support Customer software Functions self-developing
- . Support SDK
- . Onivf/RTMP Protocol(NDAA Compliant)
- . For Security/Industry/Video conference camera/streaming camera

12MP NVR Series

Professional OEM/ODM CCTV Camera Manufacturer.

12MP Ultra-HD

With a 12MP resolution, nothing is left to the imagination. The ultra-high quality 12MP NVR gives your video footage superior detail and definition.



1. H.265/H.264 High Profile Dual Stream Video Compression HDMI/VGA Output
2. Multi-mode Recording: Manual/ Schedule/ Motion / Alarm
3. Support 8/12/20/36CH Playback
4. Support TCP/IP, HTTP, DHCP, DNS, DDNS, RTP / RTCP/RTSP/NTP, FTP, ONVIF Network Protocol
5. Remote Control via Web or CMS: Preview, Playback, Backup, PTZ and Configuration
6. Multi-user Online Simultaneously
7. Support ONVIF Profile T/S
8. Powerful Smartphone App (iPhone, Android with P2P function)

Picture:					
Model	BC-N081-9MA6-P8 (8CH PoE)	BC-N121-9MA3	BC-N202-9MA3	BC-N322-9MA3	BC-N362-9MA3
IP video input:	8CH+8CH	12CH	20CH	32CH	36CH
HDMI/VGA output:	1 HDMI(4K), 1 VGA				
Recording	12mp/4K/5MP/3MP/1080P/D1/VGA				
Frame Rate:	Main stream: 25 fps (P) / 30 fps (N); Sub-stream: 25 fps (P) / 30 fps (N)				
Audio:	IN/OUT				
Incoming bandwidth:	64Mbps	64Mbps	80Mbps	112Mbps	280Mbps
compression formatconnection:	H265, H264				
Synchronous Playback:	Instant replay, regular replay, intelligent replay 1 CH 12MP/ 8MP/4 CH 4MP				
SATA:	1 SATA interface for 1 HDD	1 SATA interface for 1 HDD	1 SATA interface for 1 HDD	2 SATA interfaces for 2 HDDs	2 SATA interfaces for 2 HDDs
Capacity:	Up to 8 TB for each disk				
Network Interface:	1 RJ45 10/100Mbps self-adaptive Ethernet interface			1 RJ45 10M/100M/1000M self-adaptive Ethernet	
USB Interface:	2				
Alarm:	N/A				
RS485:	N/A				
Power Supply:	52V DC	12V DC	12V DC	12V DC	12V DC

(NDAA Compliant)

4K NVR Series

Professional OEM/ODM CCTV Camera Manufacturer.



Features

- 1.H.265/H.264 High Profile Dual Stream Video Compression
HDMI/VGA Output
- 2.Multi-mode Recording: Manual/ Schedule/ Motion/ Alarm
- 3.Support 8/16/32 CH Playback
- 4.Support TCP/IP, HTTP, DHCP,DNS,DDNS,RTP/RTCP/RTSP/NTP, FTP, ONVIF Network Protocol
- 5.Remote Control via Web or CMS: Preview, Playback, Backup, PTZ and Configuration
- 6.Multi-user Online Simultaneously
- 7.Support ONVIF Profile T/S
- 8.Powerful Smartphone App (iPhone, Andriod with P2P function)

(NDAA Compliant)

Picture:				
Model	BC-NVR3116LS3-P8 (8CH PoE)	BC-NVR3216S-P16 (16CH PoE)	BC-NVR3116S3	BC-NVR3232S
IP video input:	8CH+8CH	16CH	16CH	32CH
HDMI/VGA output:	1 HDMI(4K), 1 VGA			
Recording	4K/5MP/3MP/1080P/D1/VGA			
Frame Rate:	Main stream: 25 fps (P) / 30 fps (N); Sub-stream: 25 fps (P) / 30 fps (N)			
Audio:	IN/OUT			
Incoming bandwidth:	64Mbps	64Mbps	64Mbps	160Mbps
compression formatconnection:	H265,H264,H265+			
Synchronous Playback:	1CH 4K/4CH1080P/16CH sub-code			
SATA:	1 SATA interface for 1 HDD	2 SATA interfaces for 2 HDDs	1 SATA interface for 1 HDD	2 SATA interfaces for 2 HDDs
Capacity:	Up to 10TB for each disk			
Network Interface:	1 RJ45 10/100Mbps self-adaptive Ethernet interface			2 pcs RJ45
USB Interface:	2			
Alarm:	N/A			
RS485:	N/A			
Power Supply:	52V DC	52V DC	12V DC	12V DC



Features

- 1.H.265/H.264 Dual-stream Video Compression
- 2.8MP(4K)5MP HD-TVII/AHD, 4MP HD-CVI, 3MP HD-TVI, 1080P4TVII/AHD/CVI and 960H Analog Camera Input
- 3.8MP(4K)@15fps/5MP TVI@11fps, 4MP HD-CVI@15fps, 1080P TVIAHDCVI@25fps, 720P TVI AHD CVI/960H D1@ 25/30fps Recordingfor Each Channel
- 4.HDMI /VGA /BNC Output
- 5.Powerful Smart Phone App (iPhone/Android with P2P Function)
- 6.Support Coaxial Audio(TVI & CVI)
- 7.Support UTC PTZ control

picture				
Mode	BC-D9804EH2-A9	BC-D9708EHH2-A9	BC-D9916ETH2-D9	BC-D9908FTH2-A9
System	Compression	H.265/H.264 High profile		
Video	Input	BNC*4	BNC*8	BNC*16
	Output	HDMI*1:4K(3840*2160), VGA*1:1080P(1920*1080),	HDMI*1:4K(3840*2160), VGA*1:1080P(1920*1080),	HDMI*1:4K(3840*2160), VGA*1:1080P(1920*1080),
Audio	Input	RCA*1/Coaxial audio*4	RCA*1/Coaxial audio*8	RCA*1/Coaxial audio*16
	Output	RCA*1		
	2-way audio	Take up channel one audio input		
Record	Resolution	5MP@12FPS		8MP@15fps
	Frame rate	5MP@6FPS		8MP@6FPS
	Encode	VBR/CBR		
	Quality	6 level		
Mode	Manual, Schedule, Motion, Alarm			
Playback	4CH	8CH	16CH	8CH
Network	Interface	1 RJ45 10M/100M adaptive ethernet network port x 1		
	Others	15 Users Online, Dual Stream		
Port	HDD	SATAx 1, 10T per HDD;		
	USB	USB2.0 * 2, one for mouse, another for USB backup device		
Others	UTC	Support(OSD Menu, PTZ control)		
	Power supply	DC12V		
	Consumption	<10W(without HDD)		
	Dimensions	172.7 X 44 X 81.3mm (W*D*H)		
	Working	-10~50°C, 10%~90% (Humidity)		

(NDA Compliant)

Junction Box and Bracket

(Support Hikvision Camera and Besview Camera)

							
BC-JBE21W	BC-JBE31W	BC-JBE33W	BC-JBV20W	BC-JBE20W	BC-JBE30W	BC-JBE40W	BC-WBE31W
Besview camera	Besview camera	Besview camera	Besview camera	Hik camera	Hik camera	Hik camera	Besview camera
 	 	 	  	 	 		         
		Hik camera	Hik camera				
		 	  				



ALARM PANEL INTEGRATION

For Video Verification.

The EyE is a revolutionary device that simply sits in line with any new or existing alarm and video system to create one powerful video monitoring platform.

The EyE will pair the camera with any alarm zone and send video signals to our central station.



GADZ VIEW MONITORING PORTAL

Video verification that makes sense.

When an alarm is triggered, the camera that's assigned to that zone will send visual to GVT Monitoring Portal.

GVT operator will immediately check the video and text/call the client to confirm intrusion, if not verified we will dispatch a security team and report a robbery in progress.



With this solution, it makes the EyE your only cost to get started.

WE OFFER

Proactive Video Monitoring

- ✓ Proactive Remote Video Monitoring.
- ✓ Live & Alarm video within 3 seconds of activation.
- ✓ Engage customers with CHEKT's Verifier App Service.
- ✓ Automated and Operator controlled audio broadcasts to the protected site.
- ✓ Automated and Operator-controlled lighting, gates, doors, & sirens.
- ✓ Interactive site map for operator awareness.
- ✓ Encrypted video transmission.
- 🔗 Why Visual Alarm Monitoring Matters?





GVT 8 Zone Video Control Panel -CKB-308

The CKB-308 8-Channel Visual Security Bridge is POE powered video security panel for security professionals to connect cameras, alarm sensors and video analytics for cloud-based visual security and video alarm monitoring.

- 8 Camera Channels
- Event Triggers; Camera Analytics, Physical Sensors, & API Events
- Pair Cameras with Existing Alarm Panel Zones
- 1 Normally Open and Closed Controllable Relay Output
- Arming & Disarming Options
- Converts Video Analytics Alarm Signals for Central Station Response
- IP Audio Integration for Audio Messaging
- Line-level Analog Audio Capability
- End-User Mobile App
- POE Power or 12v DC



12v2 Zone Video Control Panel – CKB-312

The CKB-312v2 12-Channel Visual Security Bridge is POE powered video security panel for security professionals to connect cameras, alarm sensors and video analytics for cloud-based visual security and video alarm monitoring.

- 12 Camera Channels
- Event Triggers; Camera Analytics, Physical Sensors, & API Events
- Pair Cameras with Existing Alarm Panel Zones
- 4 – 5Amp Normally Open and Closed Controllable Relay Outputs
- Arming & Disarming Options
- Converts Video Analytics Alarm Signals for Central Station Response
- IP Audio Integrations for Audio Messaging
- Line-level Analog Audio Capability
- Launch cameras with your existing alarm signals in the central station.
- End-User Mobile App



CHeKT 15W IP Horn Outdoor Speaker | (OP-CKIPS15W)



The CHeKT 15 & 30 Watt Outdoor IP Speakers are designed to withstand outdoor conditions. With an IP67 waterproof rating, they provide live and automated audible alerts when integrated with your CHeKT Visual Security. With PoE power and IP communication connection, the CHeKT IP speakers eliminate the need for a local power supply and allow for remote cloud management using the CHeKT Dealer Portal.

- Remote Live Broadcasts from Mobile App and Alarm Monitoring Centers.
- Cloud Management of Messages and Configuration when Paired with your CHeKT Dealer Portal



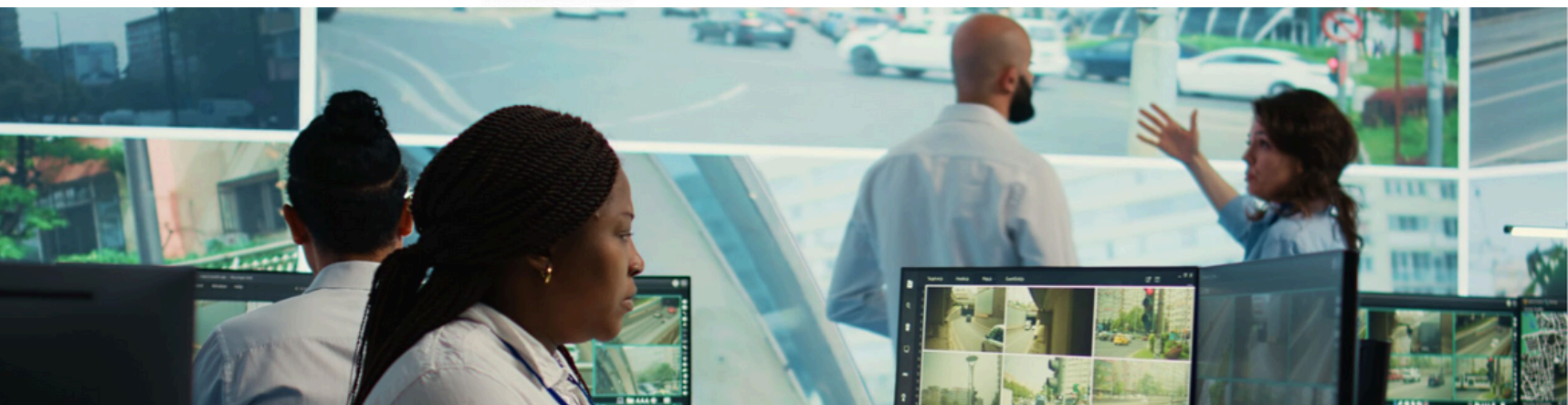
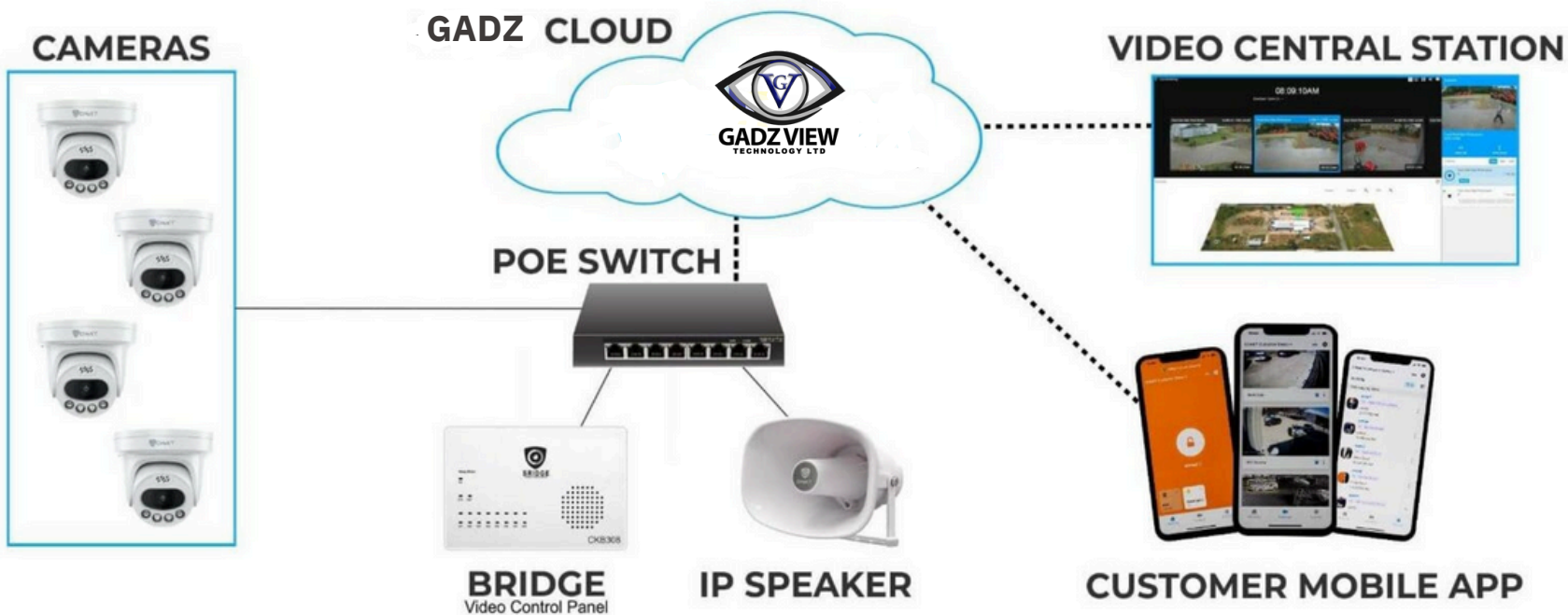
CHeKT 30W IP Horn Outdoor Speaker | (OP-CKIPS30W)



The CHeKT 15 & 30 Watt Outdoor IP Speakers are designed to withstand outdoor conditions. With an IP67 waterproof rating, they provide live and automated audible alerts when integrated with your CHeKT Visual Security. With PoE power and IP communication connection, the CHeKT IP speakers eliminate the need for a local power supply and allow for remote cloud management using the CHeKT Dealer Portal.

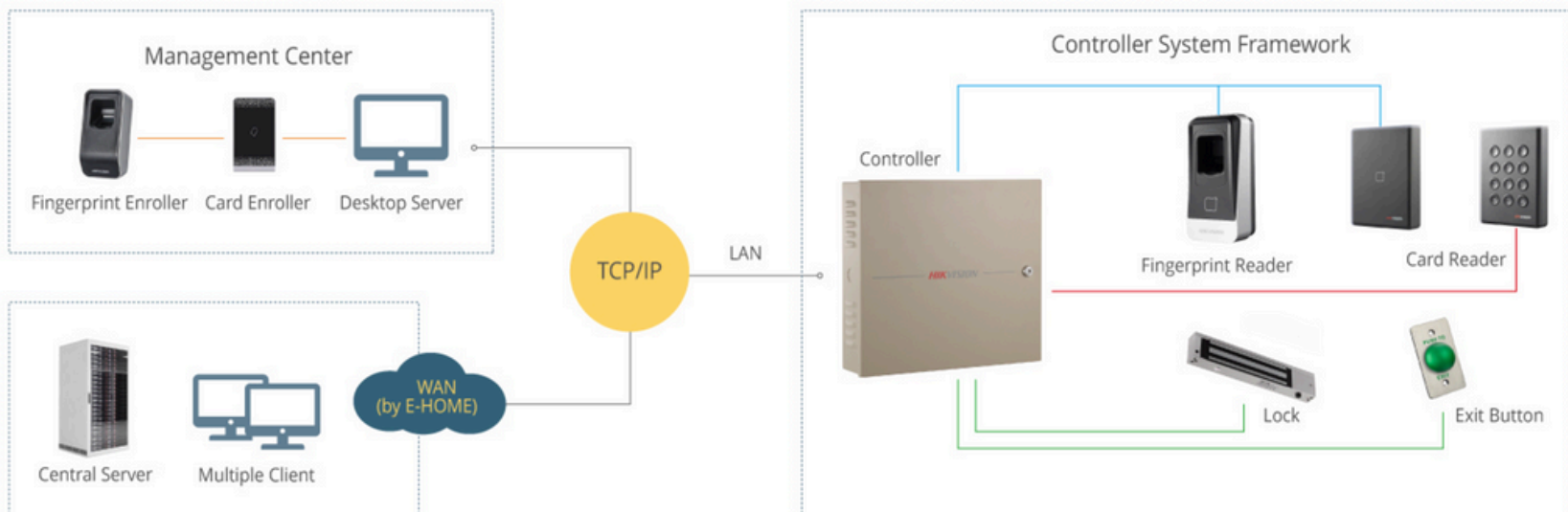
- Remote Live Broadcasts from Mobile App and Alarm Monitoring Centers.
- Cloud Management of Messages and Configuration when Paired with your CHeKT Dealer Portal
- Produces Loud and Excellent Sound
- IP67 Waterproof Design for Installation Outdoors
- POE Eliminates Need for Local Power Supply
- Compatible with VoIP, SIP Devices (IPPBX, IP Phone) via SIP
- Compatible with IP Camera VMS via ONVIF
- Supports Pre-Recorded Messages

Gadz View Visual Security Installation



Hikvision access control system is an advanced and comprehensive solution designed to enhance security and control access at a variety of locations. Hikvision Access Controller can be integrated with various other devices, such as card readers, fingerprint readers, locks or push buttons, to satisfy any user's unique requirements. They feature easy configuration and operation with web management or unified platform management. Whether deployed in commercial, industrial, or residential settings, Hikvision door access controllers stand out for their reliability and versatility.

ACCESS CONTROL SYSTEMS



DS-K2602T

Pro Series Access Controller



DS-K2602T (main board)

Access Controller



DS-K2604T

Pro Series Access Controller



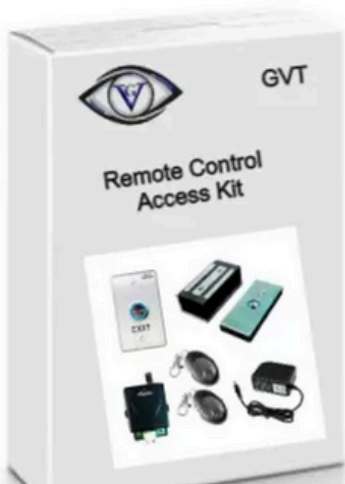
BIG
DEALS

Doctor Office
Dental Office
Pharmacy

Barber Shop
Cloths Store

0-GVT-Access Kit with RFID Entry Keypad

- 600lb Magnetick Lock
- 600lb ZBracket
- RFID Proxy Keypad w/Card
- Override KeySwitch
- Lighted Push to Exit Button
- Pizer Sounder
- Wireless Transmitter Kit
- 5amp Access Control Panel



BIG
DEALS

Doctor Office
Dental Office
Pharmacy

Barber Shop
Cloths Store



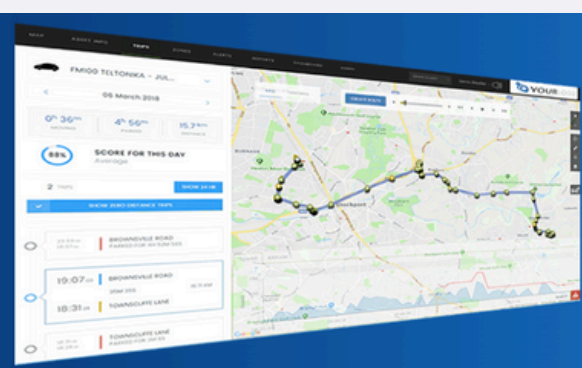
0-GVT-Access Control Kit w/Remote Control

- 600lb Magnetick Lock
- 600lb ZBracket
- Override KeySwitch
- Lighted Push to Exit Button
- Pizer Sounder
- Wireless Transmitter Kit
- 5amp Access Control Panel

The WhiteLabel Tracking Software Platform

Powering GPS Tracking, Fleet Management, Asset management & IoT service providers around the world since 2009

GADZ TRACK



Works with any tracker

The WhiteLabel Tracking platform is compatible with over 2000 devices, and we work closely with the biggest manufacturers in the industry. Using higher end devices unlocks more capabilities in our software; however our software works seamlessly with budget devices too. A small set of the popular manufacturers are listed below and we can integrate your device if needed.



Bofan PT510

Port: 9017



Bofan PT60

Port: 9017



Bofan PT 80

Port: 9017



Bofan PT100

Port: 9017



Powerful dashboard

Drag & drop widgets to create the views you need.
Choose from a vast array of widgets, including:

- Fleet Overview Harsh Behavior
- Upcoming Reminders & Maintenance
- Trips Heat Map
- Distance Traveled Graph
- Worst Overspeeders
- Most Violated Zones
- Fleet Fuel Statistics
- Most Traveled Assets
- Fuel Drains

Cloud hosted solutions

The WhiteLabel Tracking system runs on multi cloud platforms with 70+ servers across multiple regions and complies with the highest security standards, we'll focus on keeping the platform up to date and running efficiently so you can focus on running your core business, and building a profitable tracking business.

Contact us





Contact us for More

Questions? Comments? Concerns?

Contact us to discuss anything you'd like.



Address

14C Parkington Plaza,
Half Way Tree Rd,
Kingston

Phone

+1876-622-2186

Email

admin@gadzviewtech.com

Online

www.gadzviewtech.com